



# JOHNSTONE CONCRETE & LANDSCAPE SUPPLIES PTY LTD

ABN: 43 151 205 882  
PO Box 878 Narrabri NSW 2390 Ph: 026792 3036 Fax: 0267924778



## WAVE HILL QUARRY - POLLUTION INCIDENT RESPONSE MANAGEMENT PLAN (PIRMP/R13) – 1 month post activation



### Revision Status Register

Section/Page/Annexure	Revision Number	Amendment/Addition	Distribution	Approval Date
All	PIRMP/01	Original	WHQ/SQC	20/08/2012
All	PIRMP/R02	1 <sup>st</sup> Revision	WHQ/SQC	01/08/2013
Introduction Page 3	PIRMP/R03	2nd Revision	WHQ/SQC	2/08/2014
All	PIRMP/R04	3 <sup>rd</sup> Revision	WHQ/SQC	20/08/2015
All	PIRMP/R05	4th Revision	WHQ/SQC	16/02/2017
Contact details	PIRMP 06	5 <sup>th</sup> Revision	WHQ/SQC	1/10/2017
All	PIRMP/07	6 <sup>th</sup> Revision	WHQ/SQC	27/02/2018
All	PIRMP/08	7 <sup>th</sup> Revision	WHQ/SQC	9/5/2019
All	PIRMP/09	8th Revision	WHQ/SQC	18.6.2020
Wave Hill R.A	PIRMP/10	9th Revision	WHQ/SQC	27.8.2020
All	PIRMP/11	10th Revision	WHQ/SQC	27.11.2021
All	PIRMP/12	Activation of PIRMP – dust management	WHQ/SQC	6.4.2022
Current Revision	Date Implemented		PIRMP Test Schedule	Next Review and Test Date
13	6.5.22 (under Specialised Quarries 1.5.22)		12 monthly	6.5.23

## **Table of Contents**

1. INTRODUCTION .....	4
1.1 PURPOSE AND SCOPE OF THE PLAN .....	4
2. STRUCTURE OF THE PLAN .....	6
3. NOTIFICATION OF A POLLUTION INCIDENT .....	7
3.1 RESPONSIBILITIES AND DUTIES .....	7
3.2 DEFINITION OF A POLLUTION INCIDENT .....	7
3.3 POLLUTION INCIDENT REPORTING .....	7
3.4 POLLUTION INCIDENT REPORTING PROCESS .....	8
3.5 OTHER EMERGENCY CONTACTS .....	9
3.6 RECORDING POLLUTION INCIDENT DETAILS .....	9
4. INCIDENT RESPONSE AND POST-NOTIFICATION PROCEDURES .....	10
5. PROVIDING EARLY WARNINGS TO NEIGHBOURS AND COMMUNITY .....	11
6. GENERAL HAZARDS TO HUMAN HEALTH OR THE ENVIRONMENT ASSOCIATED WITH LICENCED ACTIVITY .....	11
7. INVENTORY OF POTENTIAL POLLUTANTS .....	12
8. RISK ASSESSMENT – LIKELIHOOD OF HAZARDS OCCURRING AND THE SEVERITY OF HARM .....	12
8.1 PREEMPTIVE ACTIONS TO MINIMISE OR PREVENT ANY RISK OF HARM TO HUMAN HEALTH OR THE ENVIRONMENT .....	12
8.2 SAFETY EQUIPMENT TO MINIMISE THE RISKS TO HUMAN HEALTH OR THE ENVIRONMENT .....	13
9. PURPOSE AND OBJECTIVES OF STAFF TRAINING AND AWARENESS PROGRAMS .....	13
10. MANNER IN WHICH THE PIRMP IS TO BE TESTED AND MAINTAINED .....	14
10.1 PIRMP REVIEW AND UPDATE .....	14
11. POTENTIAL CONTINGENCY MEASURES .....	14
12. FAILURE TO COMPLY .....	15-16

## **List of Appendices with Page Number**

Refer attached maps:

- Road map to Wave Hill Quarry (A)..... 18
- Adjoining properties (B) ..... 19
- Site fixtures (C) ..... 20

Risk Assessment Matrix (D) .....	21
Risk Assessment (E) .....	22-24
Chemical Inventory (F) .....	25-26
PIRMP Authority Notification Form .....	27-28
Pollution Incident Notification Form .....	29-30

## **1 INTRODUCTION**

Specialised Quarries & Concrete Pty Ltd purchased the Wave Hill Quarry on 1<sup>st</sup> May 2022. Previous owners Johnstone Concrete & Landscape Supplies Pty Ltd purchased the quarry in 2003. Initial approval for operation was obtained from Narrabri Council in 1997. Only limited activities had occurred at the quarry prior to significant infrastructure upgrades which commenced 2009-2010. Wave Hill Quarry operates with a licence for 200,000 tonnes per annum currently with approval for 500,000 tonnes currently in Council under the Licence 20139. Annual output is required to meet significant demand to meet local, state road infrastructure works along with coal mining in the Narrabri Shire area.

For any further increases in annual production will require meeting the conditions contained within the EPA and POEO Acts along with obtaining consent from Narrabri Council and the Department of Environment and Heritage as an integrated and designated development.

Wave Hill Quarry is located approximately 25 kilometres south/east of the township of Narrabri on the Wave Hill Road. Wave Hill Quarry is currently operating as per the Development Conditions set out in Development Approval No. 52/1997. The property consists of Lot 77 DP 754937 and lots 88/89 DP 821255. Wave Hill Quarry expansion application currently lodged with Narrabri Council is referenced by DA 2020/0085.

This PIRMP will be revised on an annual basis to ensure all regulatory requirements are met and any updated information is contained within this document.

### **1.1 PURPOSE AND SCOPE OF PLAN**

This Pollution Incident Response Management Plan (**PIRMP**) has been prepared by Johnstone Concrete and Landscape Supplies Pty Ltd - (**JCLS**) as the holder of Environment Protection Licence No. 20139 and in accordance with Part 5.7A of the *Protection of the Environment Operations Act 1997* (**POEO Act**) and Part 3A of the *Protection of the Environment Operations (General) Regulation 2010* (**Regulation**), *Protection of the Environment Operations (Noise control) Regulation 2017* (**Regulation**).

The activities contained within (**EPL 20139**) refer to Extracting, processing, storing, crushing, grinding and separating.

All employees, contractors and visitors of Wave Hill Quarry **must** implement this PIRMP in the event of a pollution incident (as defined in Section 3.2).

In accordance with meeting the requirements as set out in Part 5.7A of the *Protection of the Environment Operations Act 1997* (**POEO Act**) and Part 3A of the *Protection of the Environment Operations (General) Regulation 2009* (**Regulation**), this PIRMP provides the following purpose:

- Provide direction to Wave Hill Quarry staff, contractors and visitors in responding to pollution incidents that occur on the premises;
- To ensure provision are in place for timely communication with staff and others at the site, the Environmental Protection Authority (EPA), along with the other specified relevant authorities contained in the Protection of the Environment Legislation Amendment Act (POELA Act) these being, the (Narrabri Shire Council, NSW Ministry of Health, Safe Work

NSW, Fire and Rescue NSW) and any persons outside the boundaries and operations of the Wave Hill Quarry who may be impacted by any pollution incident;

- Providing controls that identify, minimise and manage the risks of a pollution incident; and
- Identifying the persons responsible for implementing this PIRMP and the testing for accuracy, currency and appropriateness as set out in the POEO Act and the POEO (G) Regulation.

All employees, contractors and visitors of Wave Hill Quarry **must** implement this PIRMP in the event of a pollution incident (as defined in Section 3.2). The persons responsible for managing and implementing this PIRMP will provide training and induction in the Wave Hill Quarry PIRMP requirements to staff and contractors.

This PIRMP provides information regarding:

- what amounts to a pollution incident;
- when pollution incidents must be notified to authorities; and what response SQC, including its employees and contractors, must take.

## 2 STRUCTURE OF PLAN

The table below identifies the relevant statutory requirements for inclusion in the PIRMP and where each section is located in the plan:

Requirement	PIRMP Section
Notification Procedures- <i>POEO Act Section 148, 149</i>	Section 3 and 4 and Flow Chart in Section 3
Action to be taken following a pollution incident- <i>POEO Act Section 153C (b) and POEO Reg 98C (1)(l)</i>	Section 4 and Risk Assessment in Appendix E
Procedures for coordinating with the EPA, Narrabri Council, Ministry of Health, Safework NSW and Fire and Rescue NSW- <i>POEO Act Section 153 C (c)</i>	Flow Chart in Section 3 and Section 4, Pollution Incident Notification Form and Authorities Notification Form on Appendix E
Descriptions of hazards to human health or environment associated with the relevant activity- <i>POEO Act Section 153C (d) and POEO Reg 98C(1)(a) and (b)</i>	Section 6 and Risk Assessment in Appendix E
Likelihood of hazard occurring- <i>POEO Act Section 153C (d)</i>	Section 8 and Risk Assessment in Appendix E
Pre-emptive actions to minimise or prevent risk of harm to human health or environment- <i>POEO Act Section 153C (d) and POEO Reg 98C (1)(C)</i>	Section 8 and Risk Assessment in Appendix E
Inventory of potential pollutants- <i>POEO Act Section 153C (d) and POEO Reg 98(C)(d) and (e)</i>	Section 7 and Risk Assessment in Appendix E
Maximum quantity of pollutants stored or held on quarry site- <i>POEO Act Section 153C(d)</i>	Risk Assessment in Appendix E
Safety equipment to minimise the risks to human health or environment- <i>POEO Act Section 153C(d) and POEO Reg 98C(1)(f)</i>	Section 8.2 and Figure 3 in Appendix C
Names, positions and contact details- <i>POEO Act Section 153C(d)</i>	Section 3
Contact details of key individuals responsible for activating PIRMP and of each relevant authority- <i>POEO Act Section 148 and POEO Reg 98C(1)(g) and (h)</i>	Flow Chart in Section 3
Early warning mechanisms for people off-site- <i>POEO Act Section 153(C)(a),(d) and POEO Reg 98C(1)(i)</i>	Section 5
Arrangements for minimising risk of harm to persons onsite- <i>POEO Act Section 153C(d) and POEO Reg 98C(j)</i>	Section 8.1 and Risk Assessment in Appendix E
Training- <i>POEO Act Section 153C(d) and POEO Reg 98C(1)(m)</i>	Section 9
Testing of plan- <i>POEO Act Section 153C(d) and Section 153E POEO Reg CI 98E</i>	Section 10
Updating of plan- <i>POEO Act Section 153F and POEO(G) Reg 98E</i>	Section 10

Manner in which plan is tested and maintained- <i>POEO Act Section 153C(d)</i>	Section 10
Detailed maps- <i>POEO Reg 98C(1)(k)</i>	Appendix A, B, C

### 3 NOTIFICATION OF A POLLUTION INCIDENT

#### 3.1 RESPONSIBILITIES AND DUTIES

If a pollution incident occurs in the course of an activity at the quarry site so that *material harm to the environment* is caused or threatened (likely to occur or to be caused), SQC under the direction of JCLS (being the licence holder) must immediately implement this PIRMP (refer to section 3.2 for definition of a pollution incident).

All pollution incidents causing or threatening material harm to the environment are to be immediately notified in accordance with flowchart in section 3.4. If you are unsure as to whether material harm to the environment has been caused or threatened, you should immediately notify the incident in accordance with the flowchart in section 3.4.

#### 3.2 DEFINITION OF A POLLUTION INCIDENT

The POEO Act defines a **'pollution incident'** as being:

*"Pollution incident means an incident or set of circumstances during or as a consequence of which there is or is likely to be a leak, spill or other escape or deposit of a substance, as a result of which pollution has occurred, is occurring or likely to occur. It includes an incident or set of circumstances in which a substance has been placed or deposited of on premises, but it does not include an incident or set of circumstances involving only emission of any noise."*

The POEO Act defines **'pollution'** in the following terms:

*Pollution means:*

- (a) water pollution, or
- (b) air pollution, or
- (c) noise pollution, or
- (d) land pollution.'



### **3.3 POLLUTION INCIDENT REPORTING**

The flowchart in section 3.4 details the process for reporting a pollution incident to the relevant authorities.

The contact details of key individuals who are responsible for activating this plan- including notifying authorities and managing the response to a pollution incident- are as follows:

1. **Clinton Johnstone**, Wave Hill Quarry Manager, who can be contacted 24 hours a day, 7 days a week on 0427 522 206 or 02 6792 3036; -
2. **Margaret Koutoumanos**, Compliance Manager, who can be contacted Monday to Friday 7am – 4pm – 0414 470 831  
***in the event none of the above can be contact please contact 3. Nick McClure***
3. **Nick McClure**, SQC Operations Manager, who can be contacted 24 hours a day, 7 days a week on 0433817881 or 02 6792 3036

For avoidance of doubt the above individuals are listed in order to be contacted and only one person needs to be contacted in the event of a pollution incident.



### 3.4 POLLUTION INCIDENT REPORTING PROCESS

The process below shown below is to be followed by all **employees** and **contractors** of Specialised Quarries & Concrete Pty Ltd in event that a pollution incident occurs at Wave Hill Quarry:

**If you become aware of a pollution incident**

- i.e. any incident or set of circumstances during or as consequence of which there is likely to be a leak, spill or other escape or deposit of a substance as a result of which water, air, noise or land pollution has occurred, is occurring or is likely to occur (**pollution incident**)
- and the incident involves **material harm to the environment** – harm to the environment is material if it involves actual or potential harm to the health or safety of human beings or to ecosystems that is not minor OR it results in the actual potential loss or property damage of an amount, or amounts in aggregate, exceeding \$10,000 (where 'loss' includes reasonable costs and expenses that would be incurred in taking all reasonable and practicable measures to prevent, mitigate or make good harm to the environment).

**IF YOU ARE UNSURE CONTINUE WITH NOTIFICATION PROCESS**

**JOHNSTONE CONCRETE AND LANDSCAPE SUPPLIES PTY LTD  
(SPECIALISED QUARRIES & CONCRETE PTY LTD)**

Must immediately notify persons responsible for managing the site ("Responsible Person") as per existing procedures

Responsible Person must:

- Call one of the contacts specified in section 3.3; and
- Complete the Incident Notification Form (to include items 1-5 as listed next page).

***If contacts in 3.3 cannot be contacted, go to next step***

**Must immediately notify the following Government Authorities in order listed below;**

- EPA (131 555), then
  - Narrabri Shire Council (02 6799 6855)
  - Ministry of Health (02 9391 9000)
  - Safe Work NSW (13 10 50)
  - Fire and Rescue (000) Mobile 112 (if no reception)
  - NSW Department of Planning & Infrastructure (02 9228 6111)

**INCIDENT NOTIFICATION FORM** must be completed by Site Responsible Person  
**AUTHORITIES NOTIFICATION FORM** to be completed by person contacting above Authorities

### 3.5 OTHER EMERGENCY CONTACTS

Emergency Services	Contact Details
Narrabri Ambulance Station	131 233 or 000 or Mobile 112
Narrabri Hospital	6799 5066
Narrabri Police Station	6792 7199 or 000 or Mobile 112
Narrabri Fire Brigade	6792 5107 or 000 or Mobile 112
Poison Information	131 126 or 000 or Mobile 112

### 3.6 RECORDING POLLUTION INCIDENT DETAILS

#### Information that must be notified

1. Time, date, nature, duration and location of incident,
2. Location where incident is occurring or is likely to occur,

*If known;*

3. Nature, estimated quantity or volume and concentration of any pollutants involved,
4. Circumstances in which incident occurred (including cause of incident), and
5. Action taken or proposed action to be taken to deal with the incident any resulting pollution or threatened pollution.

If any of the above details are not known at time of initial notification, as the information becomes clear or available it must be reported immediately.

#### **NOTES**

A detailed record should be maintained at each step of the process, including the date and time actions are taken. The "INCIDENT NOTIFICATION FORM" and "AUTHORITIES NOTIFICATION FORM" ARE TO BE USED FOR THIS PURPOSE.

Any decision to notify or not notify must be recorded in writing with reasons for the decisions that was made.

## **4 INCIDENT RESPONSE AND POST- NOTIFICATION PROCEDURES**

Once all authorities have been notified the appropriate response and actions for the particular hazard must be implemented immediately. Refer Risk Assessment **Appendix E**. Should the incident not be described in **Appendix E**, the following procedure must be followed:

**Step 1 (Assessment)** - Assess safest and most appropriate alternate clean up procedure based on pollutant properties and site issues.

**Step 2 (Remedial Action)** – Remove contaminated soil, wastewater and used spill equipment to an appropriate holding area or location within the quarry, awaiting waste disposal and/or remediation as appropriate to licensing conditions and pre-determined requirements.

**Step 3 (Ongoing Actions)** – Following an incident the following must be undertaken:

- I. undertake further monitoring/testing if required;
- II. complete incident report;
- III. replenish and restock spill clean-up equipment;
- IV. complete report to Authorities, as required;
- V. implement and review corrective actions to prevent reoccurrence; and
- VI. Relay and de-brief findings to relevant employees and contractors.

**Step 4 (EPA Notification)** – JCLS as licence holder of the site must provide written details of the notification to the EPA within 7 days of the incident occurring.

If any of the information identified in the flowchart in section 3.4 was not known at the time of initial notification of pollution incident to any of the mandatory Authorities, any further details or information must be relayed immediately to such Authorities.

All communications with any Authorities following the incident are to be made through **Clint Johnstone or Nick McClure** as identified in section 3.3. Following initial notification of the incident, these persons will ensure regular contact is made with Authorities, and other relevant persons who had been notified of the incident with relation to actions taken to manage the pollution caused by the incident. In particular these personnel will:

- liaise with the EPA regarding appropriate actions to be taken to control, manage and mitigate the pollution;
- work co-operatively with the EPA any other relevant statutory bodies to clean-up any pollution on site;
- notify the community of the results of ongoing monitoring of the pollution; and
- consultation with other interested parties who are in the proximity of the quarry and its operations regarding off-site actions that may have potential impact on themselves or their properties.

## **5 PROVIDING EARLY WARNINGS TO NEIGHBOURS and THE COMMUNITY**

The Wave Hill Quarry is located at 975 Wave Hill Road, with neighbours located in close proximity to the West, East and South East of quarry boundaries and all within 2000 metres of quarry operations. We are also adjacent to a Boral Country hard rock quarry whose no longer operate, are located to the immediate Western boundary of JCLS immediate Western neighbour (Refer map [Appendix B](#)). All parties share and traffic the Narrabri Shire road 18, (Wave Hill Road).

Any pollution incident causing or threatening harm to human health and/or environment in areas adjacent to Wave Hill Quarry will be communicated to all persons likely to be adversely affected by the incident. Communication with these people will be made as soon as practicable following a pollution incident as well as an ongoing basis until the incident has been fully controlled and any harm caused as a result of the incident has been rectified.

SQC will contact people affected or likely to be affected by incident either by telephone, letterbox drop, or 'doorknocking'. The method and content of any communication will depend on the pollution incident and the actions required protecting human health and the environment. Details of contact made with adjacent property holders must be have method, time and date of contact recorded.

## **6 GENERAL HAZARDS TO HUMAN HEALTH OR THE ENVIRONMENT ASSOCIATED WITH THE LICENCED ACTIVITY**

The following potential hazards to human health and the environment are generally associated with a hard rock quarrying operation:

- pollution of waters as a result of failure of water management structures;
- pollution of air arising from carrying out of quarrying activities;
- pollution of land and/ or site water as a result of uncontrolled runoff from disturbed areas, spills and leaks of chemicals (diesel, oils, coolants etc) as a result of a failure of diversion or containment structures and/or receptacle.
- Pollution of land and/or waters from waste materials as a result of a failure to adequately capture and dispose of; and
- Noise pollution arising from the carrying out of quarrying activities.

Specific hazards, including the likelihood of such hazards occurring, are identified in the Risk Assessment in [Appendix E](#). Also included in the Risk Assessment are the pre-emptive actions to be taken by SQC to minimise the risks of these hazards occurring.

## **7 INVENTORY OF POTENTIAL POLLUTANTS**

Almost any substance has the potential to become a pollutant if it is of a sufficient quantity and/or is impacting a sensitive environmental or community receptor. SQC in conjunction with JCLS has employed a risk based approach in the development of this PIRMP to ensure that particular emphasis is given to substances that have the potential to cause material harm. On this basis, the major chemical concerns (diesel, oils) are stored and bund in accordance with statutory requirements and relevant Australian Standards. Chemical storage areas along with spill kit locations are marked on site map in [Appendix C](#). SDS's and register are kept at the weighbridge office for all onsite chemicals and substances.

## **8 RISK ASSESSMENT – LIKELIHOOD OF HAZARDS OCCURRING AND THE SEVERITY HARM**

The Risk Assessment (**Appendix E**) evaluates the likelihood of an environmental hazard occurring and the severity (or likely harm) it may cause.

In preparing the Risk Assessment, the following steps were undertaken.

1. Environmental hazards were identified at the quarry site
2. Each hazard was then evaluated, using the SQC Risk Assessment Matrix shown in **Appendix D**
3. For each hazard the current or required controls were identified.
4. The environmental hazards were then re-evaluated using the Risk Assessment Matrix to determine if acceptable controls were in place.

### **8.1 PREEMPTIVE ACTIONS TO MINIMISE OR PREVENT ANY RISK OF HARM TO HUMAN HEALTH OR THE ENVIRONMENT**

In addition to identifying environmental hazards the Risk Assessment also describes pre-emptive actions ('controls') that have been identified to reduce the likelihood of a particular environmental hazard occurring.

In conjunction with the pre-emptive actions identified in the Risk Assessment, SQC also implements the following general pre-emptive actions to minimise the risk of harm occurring as the result of a pollution incident:

1. all SQC personnel receive training as outlined in section 9 of this PIRMP;
2. all SQC personnel are trained in the appropriate use of safety equipment and devices to minimise possible incidents;
3. risk assessments are completed to identify and mitigate possible health, safety and environmental hazards within the site;
4. monitoring of noise, dust and water impacts are undertaken in accordance with the site's EPL conditions and requirements;
5. regular checks and maintenance of equipment is carried out by site personnel IE, plant pre-starts;
6. new equipment is inspected thoroughly prior to its use on site to ensure it meets health, safety and environmental standards;
7. toolbox site meetings are held to ensure site personnel are aware of all current or changing activities onsite;
8. management will conduct periodic inspections at site to ensure environmental standards are being complied with and adhered to;
9. all incidents are investigated and corrective actions are developed and implemented to prevent reoccurrence;
10. incidents are communicated to site personnel to raise awareness of hazards and implementing steps to prevent reoccurrence;
11. this PIRMP is reviewed annually to ensure appropriateness and adequacy in managing potential pollution incidents;
12. evacuation procedures and drills reviewed and conducted annually or within 1 month of any significant incident relating to safety or pollution; and

13. evacuation muster points are identified and disseminated throughout worksite to employees and contractors.
14. Speed limit within the quarry is 10kmph. This is to strictly adhered to as part of the Quarry Traffic Management Plan.

## **8.2 SAFETY EQUIPMENT TO MINIMISE RISK TO HUMAN HEALTH OR THE ENVIRONMENT**

Activities must be carried out in a competent and responsible manner. This includes the processing, handling, movement and storage of material and substances used to carry out the activity and the treatment, storage, processing, reprocessing, transport and disposal of waste generated by the activity. All plant equipment installed at the site or used in connection with the activity must be stored and maintained in an appropriate and efficient condition along with being operated in a proper and component manner.

In order to comply with state and federal legislation, SQC in conjunction with JCLS has a responsibility to minimise the risks to employees, contractors and visitors whilst and to protect the environment of the quarry and surrounds. PPE is located and provided on site for person to use, together with individual SWMS for specific machine operations and quarry operations. Each SWMS outlines the PPE to use for that task. Pre-starts are used to monitor any faults or damage to equipment to enable the appropriate maintenance or preventative measures. During these pre-start inspections on both fixed and mobile plant, leaks or spills can be identified at this time. If identification is known then the appropriate action can then be undertaken.

## **9 PURPOSE AND OBJECTIVES OF STAFF TRAINING AND AWARENESS PROGRAMS**

Employees and contractors will be made aware of this PIRMP and its functions:

- by review and refresher training as required
- when any amendments or changes are made to this PIRMP.

The principal objective of the training is to create an understanding by staff and contractors of the requirements of the PIRMP including the specific following matters:

- awareness of the potential for harm to persons and environment from materials held and used on-site;
- information on the sensitivity of the environment on and adjacent to the site;
- the environment responsibilities of SQC;
- use of correct personal protective equipment (PPE) and any appropriate and/or necessary health and safety training;
- reporting procedures if there is a risk of surface water, groundwater, air or land contamination;
- safe and correct use of all spill clean-up equipment or pollution prevention structures or devices onsite;
- safe handling and legal disposal of contaminated materials and wastes resulting from an incident, including;
  - arrangements for using specialised contractors and services; and
  - appropriate and safe decontamination.

All records of training will be kept at Wave Hill Quarry.

## **10 MANNER IN WHICH THE PIRMP IS TO BE TESTED, MAINTAINED AND ACCESSED**

### **10.1 PIRMP REVIEW AND UPDATE**

A copy of this PIRMP must be kept at the Wave Hill Quarry weighbridge office at all times to ensure its implementation in the event of a pollution incident. The functionality and adequateness of this PIRMP must be tested every 12 months and within 1 month of any pollution incident to ensure it is maintained in an up to date, capable and workable status.

The results of the test will be communicated to relevant personnel identifying any non-compliance during testing procedure. Non-compliances or inadequacies will be documented and followed up for immediate rectification.

The revision status of this PIRMP is located on title page and in footer section of each page. This PIRMP shall be tested by way of:

#### Desktop Testing

- All data in the PIRMP is checked and updated as necessary (contact details, chemical inventory, etc)
- PIRMP risk assessments are reassessed at time of testing
- Additional risk assessment are conducted if necessary
- PIRMP and other pollution/environment training effectiveness is evaluated if relevant.

#### Practical Testing

- The delegation of responsibilities in the event of an incident is tested
- The response time (mobilisation of equipment) if evaluated.

An electronic copy of the PIRMP will be displayed on the SQC web site [www.specialisedquarries.com.au](http://www.specialisedquarries.com.au) for public and other interested parties' perusal and viewing.

## **11 POTENTIAL CONTINGENCY MEASURES**

In the event that monitoring of the PIRMP indicates an issue with this PIRMP, SQC will conduct an investigation to identify and assess potential rectification measures. These rectification measures could be those below, without being exhaustive of others:

- an audit of the PIRMP, measurement of management practices;
- identification of potential system improvements such as staff training; and
- the conducting of additional monitoring and reviews (e.g. increase in frequency, third party assessment) to check on proposed contingency measures.



## 12 FAILURE TO COMPLY

Offence	Maximum penalty (corporation)	Maximum penalty (individual)
Polluting water/air/land/noise	\$1,000,000 plus \$120,000 for each day offence continues	\$250,000 plus \$60,000 for each day offence continues
Failure to report pollution incident immediately (where material harm to the environment caused or threatened) and provide all relevant information and to all authorities provided in the Act	\$2,000,000 plus \$240,000 for each day offence continues	\$500,000 plus \$120,000 for each day offence continues
Failure to maintain control equipment in an efficient condition and operate control equipment in proper and efficient manner	\$1,000,000 plus \$120,000 for each day offence continues	\$250,000 plus \$60,000 for each day offence continues
Failure to comply with condition of Environment Protection Licence	\$1,000,000 plus \$120,000 for each day offence continues	\$250,000 plus \$60,000 for each day offence continues
*Failure to prepare pollution incident response management plan	\$1,000,000 plus \$120,000 for each day offence continues	\$250,000 plus \$60,000 for each day offence continues
*Failure to implement a pollution incident response management plan following a pollution incident where material harm to the environment is caused or threatened	\$2,000,000 plus \$240,000 for each day offence continues	\$500,000 plus \$120,000 for each day offence continues
*Failure to keep a pollution incident response management Plan on the licensed premises and make available when requested by authorities	\$1,000,000 plus \$120,000 for each day offence continues	\$250,000 plus \$60,000 for each day offence continues

<b>Offence</b>	<b>Maximum penalty (corporation)</b>	<b>Maximum penalty (individual)</b>
Failure to test a pollution response management plan every 12 months and within 1 month of a pollution incident	\$1,000,000 plus \$120,000 for each day offence continues	\$250,000 plus \$60,000 for each day offence continues

\*All holders of environmental protection licenses must prepare a pollution incident response management plan (section 153A, POEO Act).

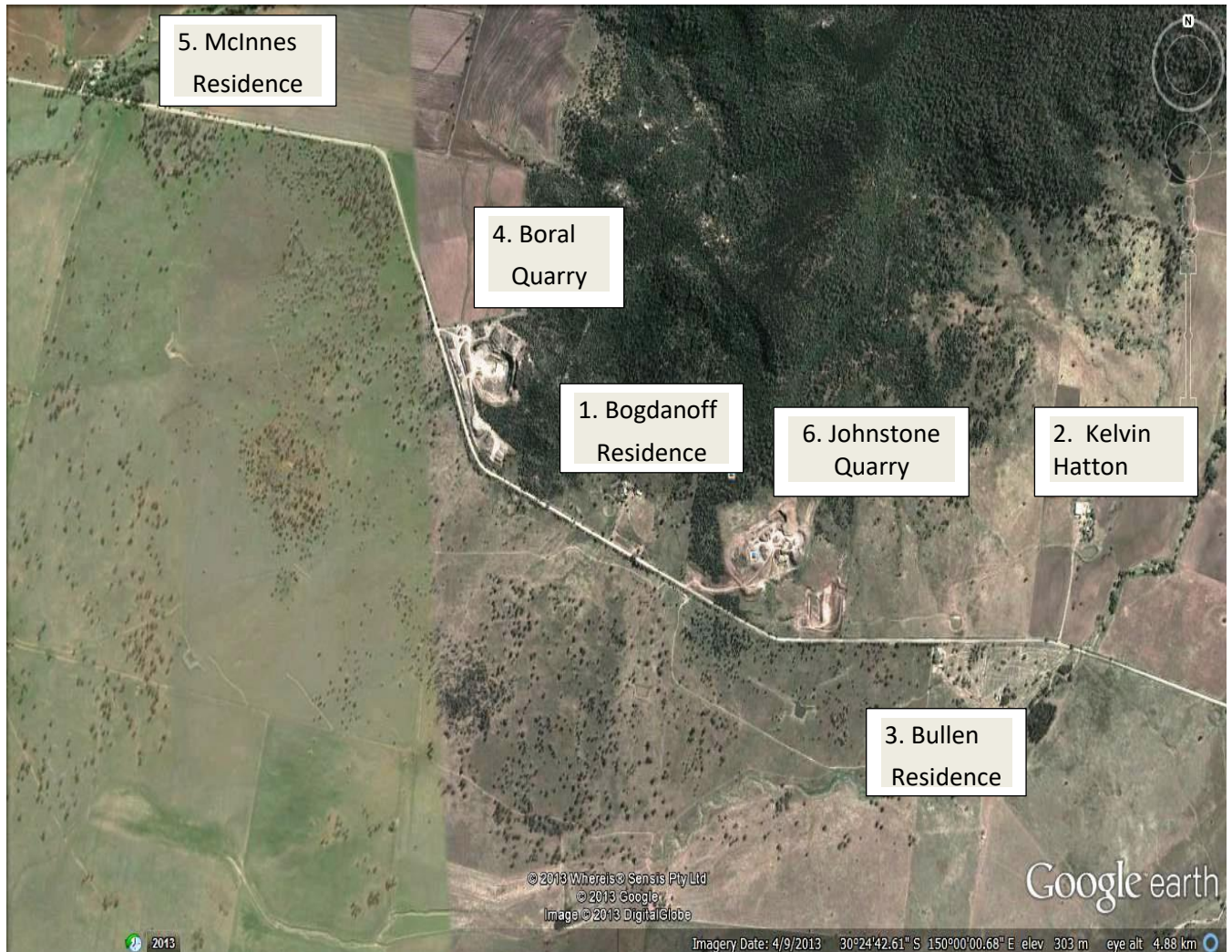
## **APPENDICES:**



Appendix: A

**JOHNSTONE'S WAVE HILL QUARRY (975 Wave Hill Road, Shire Road 18, Tarriaro 2390)**



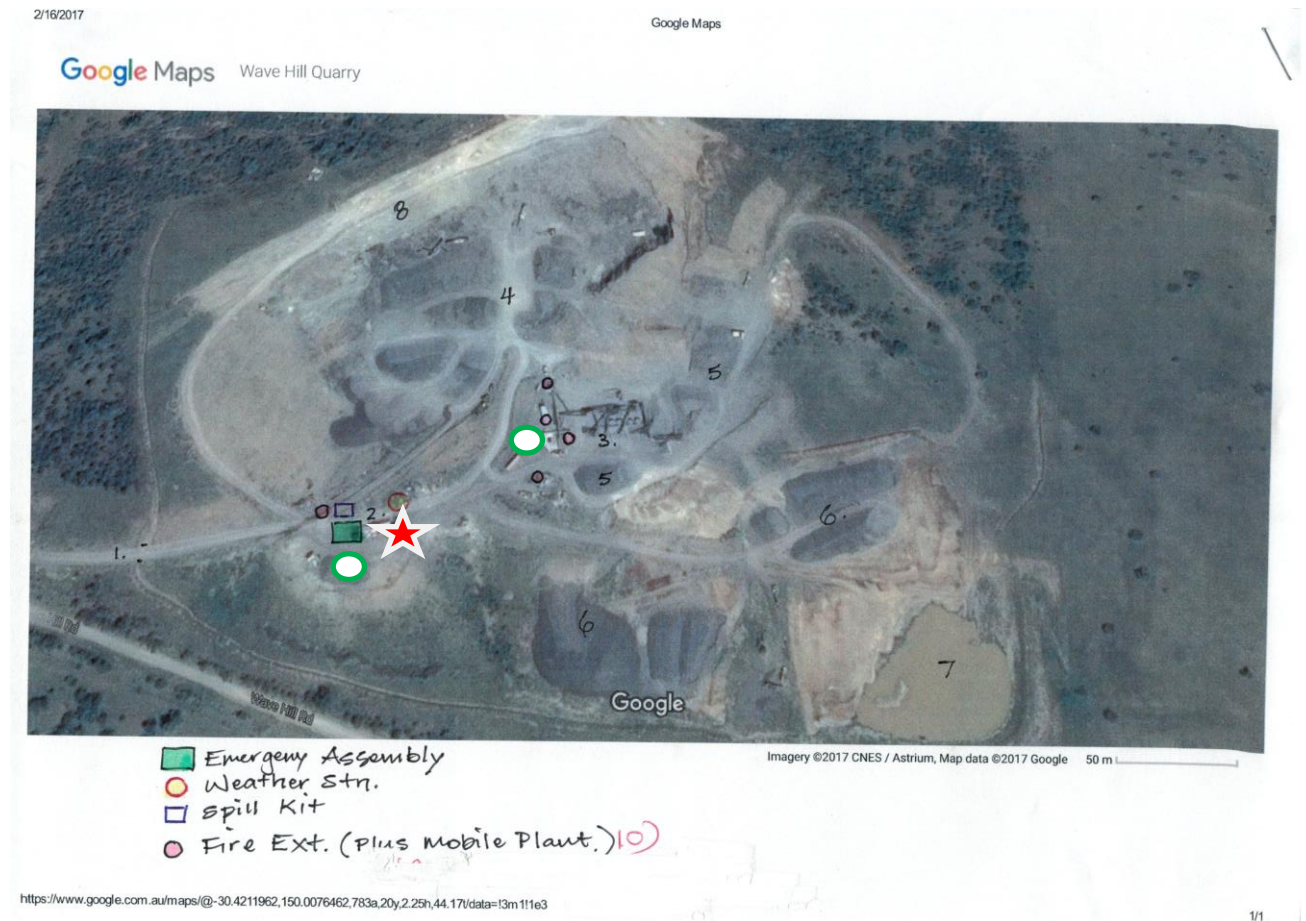


## Appendix B:

Adjoining properties and contact details:

1. **Chris Bogdanoff – (0429 921 113)**
2. **Kelvin Hatton**
3. **Anne Bullen – (6793 5237)**
4. **Boral Country – (6793 5310)**
5. **Shane McInnes**
6. **Johnstone Concrete Office – (6792 3036) Mob: Clint Johnstone (0427 522 206)**

## Wave Hill environmental and WHS site fixtures and equipment storage points:



## Appendix: C

### Legend:

1. Entrance \*
  2. Weighbridge\* - ★ PIRMP-EMERGENCY CONTACTS
  3. Crushing area\*
  4. Stock piles – Level 3\*
  5. Stockpiles – Level 2\*
  6. Stockpiles – Level 1
  7. Storage dam
  8. Quarry pit face/High Wall Area\*
- Emergency Muster Point (weigh bridge)
  - Weather Station
  - Spill Kits
  - Fire Extinguishers
  - First Aid Kits (plus vehicles and mobile plant)

## RISK ASSESSMENT MATRIX

LIKELIHOOD AND CONSEQUENCES			
Likelihood (How likely is the event to occur?)		Consequences (Significance of associated environmental impact)	
Rating	Definition	Rating	Definition
<b>5</b> Very likely	The event is expected to occur in most circumstances	<b>5</b> Catastrophic	Disaster with potential to lead to serious harm, costs and ongoing impacts
<b>4</b> Likely	The event will probably occur in most circumstances (e.g. frequently)	<b>4</b> Major	Critical event, which will be endured with proper management
<b>3</b> Possible	The event should occur at some time (e.g. once in a while)	<b>3</b> Moderate	Significant event, which can be managed under normal circumstances
<b>2</b> Unlikely	The event could occur at some time	<b>2</b> Minor	Consequences can be readily absorbed but management controls required to minimise impacts
<b>1</b> Rare	The event may occur only in exceptional circumstances	<b>1</b> Low	Minimal or little action required

Determination of the level of environmental risk					
Likelihood	Consequences				
	1. Low	2. Minor	3. Moderate	4. Major	5. Catastrophic
<b>5</b> Very likely	<b>L</b>	<b>M</b>	<b>H</b>	<b>VH</b>	<b>VH</b>
<b>4</b> Likely	<b>L</b>	<b>M</b>	<b>H</b>	<b>H</b>	<b>VH</b>
<b>3</b> Possible	<b>L</b>	<b>M</b>	<b>M</b>	<b>M</b>	<b>H</b>
<b>2</b> Unlikely	<b>L</b>	<b>L</b>	<b>M</b>	<b>M</b>	<b>H</b>
<b>1</b> Rare	<b>L</b>	<b>L</b>	<b>L</b>	<b>L</b>	<b>M</b>

Appendix: D

## LEGEND:

VH      Very High    H    High                      M    Moderate                      L    Low



## WAVE HILL QUARRY ENVIRONMENTAL RISK ASSESSMENT

Environmental Hazard	Description	Potential Receptor Pollution Risk	Likelihood	Consequence	Risk	Controls	Likelihood	Consequence	Risk	Comment
Excessive Airborne Dust	crushing, separating, stockpiling and internal vehicle and plant movements within site	Onsite workers	5	2	M	All loaded delivery trucks to be covered by tarps at all times.	5	1	L	Dust collectors and monitoring maintained at 2 nearby residences and 1 opposite the opposite (not physically on a residence)
		Off-site receptors	3	3	M	Water truck to be used to suppress road dust and stockpiles.  Suspension of quarry operations when extreme wind or climatic conditions occur – refer TARP	3	1	L	
Surface Water	runoff from around production, roadways and stockpile areas.  Catastrophic failure or overflow of sediment dam resulting in off-site impacts on adjacent water courses and catchments.	Offsite receptors	3	2	M	Surface water is diverted by planned and manufactured channel, drains and piping to storage dam located on premises.  Dam integrity and levels monitored regularly.	3	1	L	Refer to <a href="#">appendix C</a>  Overflows during extreme wet weather events will be reported under POEO licence obligation requirements
Ground Water	runoff from extraction and stockpile areas	N/A	2	1	L	Any minor seepage that may occur in extraction area would be collected by a sump in the pit area	1	1	L	

**SPECIALISED QUARRIES & CONCRETE PTY LTD - POLLUTION INCIDENT REPORTING MANAGEMENT PLAN**

						(Level 2) and used for dust suppression				
Noise	blasting, crushing, stockpiling and machinery/transport operations	Onsite workers	4	2	M	Operating to condition of the EPL Monitor climatic conditions Ensure proper maintenance of noise suppression components on plant and equipment Report faults to site supervisor	4	1	L	WHS condition – PPE to be worn when required. Notify nearby residences of blasting program or any changed site conditions that may affect noise emissions
Noise	Blasting, crushing, stockpiling and machinery/transport operations	Off-site receptors	3	1	L	Monitoring of climatic conditions with onsite weather station. Operating to EPL conditions. Stockpiling materials to provide sound bunds around quarry site	2	1	L	Refer: Wave Hill Quarry Noise and Vibration Assessment by Hushpac Engineering Pty Ltd
Fuel/Lubricants/Chemicals	Escaping from bund areas due to overfilled, leaking or damaged tanks and lubricant packaging	Onsite workers	3	2	M	Provide bunds with the capacity to capture full volume of any possible release or spill. Ensure spill kits available in fuel storage areas and maintained correctly. Inspect and check regularly tanks, hoses, filler points and other fittings for integrity and suitability. Only appropriately inducted and authorised	3	1	L	Reference Australian Standards/Codes of Practice and Safework NSW for storage and compliancy requirements. Ensure appropriate placarding of fuel storage and hazardous chemical areas.

**SPECIALISED QUARRIES & CONCRETE PTY LTD - POLLUTION INCIDENT REPORTING MANAGEMENT PLAN**

						persons to perform fuelling/refilling functions				
Loss of fuel and spills outside bund and containment areas during refuelling and fuelling operations	Diesel spilling from machinery filler points and/or fuel dispenser attachment's	Onsite persons  Offsite receptors	3	1	L	Ensure spill kits available and personnel trained in proper use.  Ensure dispensing units are properly maintained and any faults reported to site supervisor.	3	1	L	

Appendix: E

# WAVE HILL QUARRY LIST OF POLLUTING SUBSTANCES STORED OR CONTAINED AT SITE

(chemical used and quantities maintained onsite may change, requiring an updated revision and risk assessment to be conducted)

**Site address:** 975 Wave Hill Road, Tarrario 2390

**Person responsible for maintaining chemical register:** Clint Johnstone (Wave Hill Production Manager) **Date of revision:** 9/5/2019

Name and description	Amount stored	Storage location and map reference	Control measures	Risk Rating after controls as determined by Wave Hill Quarry Risk Assessment
CHEMICALS/FUELS/LUBRICANTS (any material or product with the potential for pollution risk both onsite or adjacent properties)				
Diesel	1950 litres Bunded fuel trailer (not a permanent fixture)	Refer map <a href="#">appendix C</a>	<ul style="list-style-type: none"> <li>• Bunding</li> <li>• Spill Kits</li> <li>• Training</li> <li>• Site inductions</li> <li>• Fire Fighting equipment</li> <li>• Security measures</li> </ul>	Low
Oils/Coolants	Oils – 1000 litre shuttle and 200litre drums  Coolants – 20 litre drums	Refer map <a href="#">appendix C</a>	<ul style="list-style-type: none"> <li>• Bunding</li> <li>• Spill Kits</li> <li>• Training</li> <li>• Site inductions</li> <li>• Fire Fighting equipment</li> <li>• Security measures</li> </ul>	Low
Lubricants Oils	Grease cartridges and 20 litre grease drums	Refer map <a href="#">appendix C</a>	<ul style="list-style-type: none"> <li>• Bunding</li> <li>• Spill Kits</li> <li>• Fire Fighting equipment</li> <li>• Training</li> <li>• SDS at weighbridge</li> </ul>	Low

Appendix: F

## Johnstone Concrete & Landscape Supplies Pty Ltd-Wave Hill Quarry

### Pollution Incident Response Management Plan

#### PIRMP Authorities Notification Form

Date:
Name and Position:
Site Name:
Site location:

This form is to be completed in conjunction with the Pollution Incident Notification Form.

The following Authorities **must** be contacted immediately as practical after an incident.

Authority	Contact details
Environment Protection Agency (EPA)	Pollution Line 131 555
Narrabri Shire Council	6799 6855
The Ministry for Health	(02) 9391 9000
Safework NSW	13 10 50
NSW Fire and Rescue	000 Emergency Mobile 112
NSW Department of Planning and Environment	(02) 9228 6111

The following information **MUST** be provided to relevant authorities:

**(Check tick box as information related to Authority acknowledged)**

Time: ☐

Date: ☐

Nature of incident (i.e. spill of unknown chemicals, dam release with unknown properties etc.); ☐

Duration of incident: (i.e. length of time incident occurred over or lasted): ☐

Actual location of incident (i.e. Fuel storage area): ☐

Other areas impacted by incident (i.e. dam roadway etc.): ☐

Estimated quantity of any pollutants involved (if known): ☐

The circumstances that created pollution incident (if known): ☐

Actions to control or to be undertaken to control pollution incident (if known):



Additional other important information or details (if known):



**COPY OF THIS RECORD MUST BE FILED AND KEPT ON QUARRY SITE**

**JOHNSTONE CONCRETE & LANDSCAPE SUPPLIES PTY LTD-WAVE HILL QUARRY**

**Pollution Incident Response Management Plan**

**Pollution Incident Notification Form**

Date:	6.4.2022
Time:	10.20am
Name & Position:	Clint Johnstone
Site Name:	Wave Hill Quarry
Address:	Wave Hill Road , Wave Hill

Person and position incident reported to:

**Matthew Quinn from EPA contacted Wave Hill Quarry with concerns of inadequate dust management – under SQC licence EPL 20139**

Description of incident (details should include date, time, nature and duration of incident event):

Inadequate dust management was reported at 10.15 am on Wednesday 6<sup>th</sup> April 2022 to Clint Johnstone – Quarry Manager.

Location of incident onsite:

Dust Management onsite at Wave Hill Quarry

Receptors likely to be affected by incident (if known):

N/A

The nature or estimated quantity or volume and the concentration of any pollutants involved (if known):

N/A



The circumstances leading up to or the creation of the pollution incident (if known):

The EPA contacted Wave Hill Quarry in relation to the EPA witnessing inadequate dust management.

Remedial actions taken:

The quarry plant ceased operating for a period of 15 minutes while dust suppression was checked and further dust suppression was instigated. At the time there did not appear to be excessive amount of dust – video evidence is attached to this PIRMP and rain event was ensuing also attached. The SQC Dust TARP did not indicate excessive dust, however regardless remedial action was undertaken as advised by the EPA with dust suppression, watering of roads. Within the following half hour the rain event happened.

Corrective and preventative actions taken:

A toolbox advising staff that they must follow the Quarry TARP.

Regular dust suppression to be undertaken especially in windy, dry weather conditions.

Follow up actions:

To ensure the Dust TARP is followed and if any excessive dust further dust suppression will be undertaken apart from the regular watering.

**COPY OF THIS RECORD MUST BE FILED AND KEPT ON QUARRY SITE**